

**logimic**  
*We make IoT world*

# Logimic IoT Products

Logimic, s.r.o.  
frantisek.mikulu@logimic.com





**Market**



**Lersen**



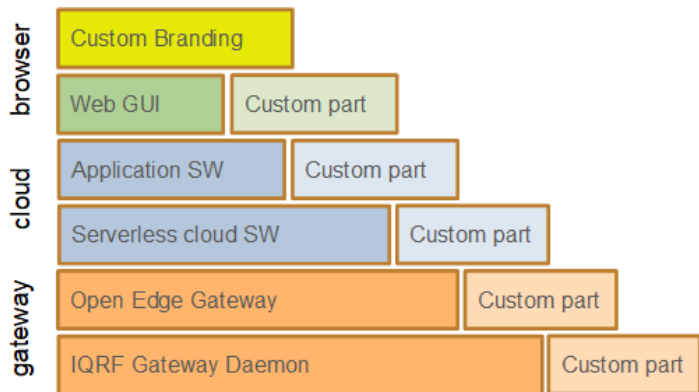
AllostasisX LLC





# Our mission

Provide applications and services for IoT.





# Our projects

- **Street lighting control**
- **Environmental monitoring**
- **Smart city sensors infrastructure**
- Sanitary technics
- Industrial heating
- Emergency lighting



**logimic**  
*We make IoT world*

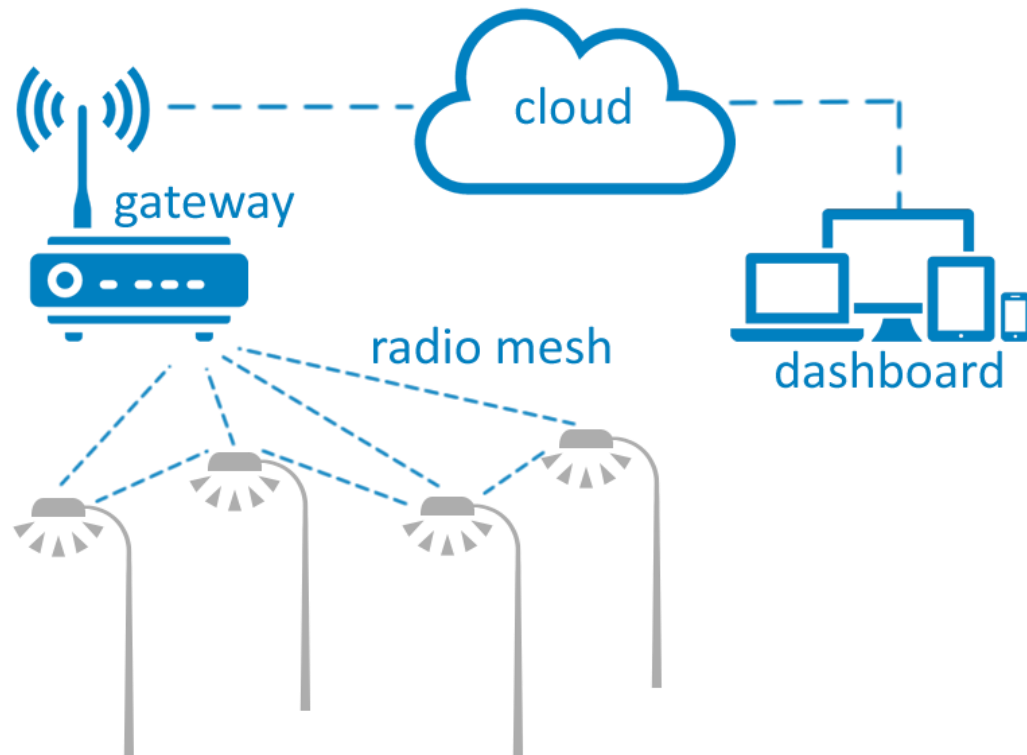
# Logimic Light

Logimic, s.r.o.  
michal.valny@logimic.com



# Architecture





- Complex software solution
- Gateway software
- Cloud solution
- Dashboards



# Logimic Light - Web interface

- Default user dashboard
- Real-time data from streets, buildings and individual lamps

Devices 109

<input type="checkbox"/>	↑↓	Power ↑↓	Intensity ↑↓	Addr ↑↓	Name ↑↓
<input type="checkbox"/>		<span style="color: green;">●</span>	94 %	78	<a href="#">Pod Rybníkem 415</a>
<input type="checkbox"/>		<span style="color: green;">●</span>	94 %	43	<a href="#">Na Louce 303</a>
<input type="checkbox"/>		<span style="color: green;">●</span>	94 %	51	<a href="#">Na Louce 346</a>
<input type="checkbox"/>		<span style="color: green;">●</span>	94 %	48	<a href="#">Heřmánková 320</a>





# Logimic Light - Device card



## Data

GPS:	50.4954296; 13.4327445	Název:	10/26
Datum instalace:	4/2/2020	lPath:	QelproLights/Jirkov/obchvat1/light-35
Datum poslední inspekce:	4/2/2020	fPath:	QelproLights/Jirkov/103/light-35
Datum příští inspekce:	4/2/2020	Addressa:	---
Typ stožáru:	unknown	Sériové číslo:	unknown
Výška instalace:	0	Typ:	Q-LUX
Vyložení:	0	Výkon [W]:	108
		Dodavatel:	Q-EL PRO s.r.o.

## Control

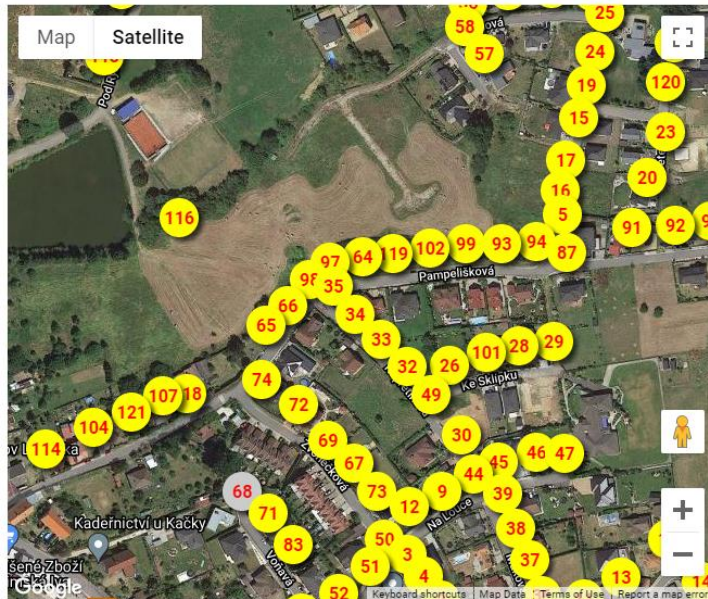
Name:	Na Rozhledě 169	
Communication:	<span style="color: green;">●</span>	online
State:	<span style="color: green;">●</span>	on
Dim level:	94 %	
Program:	Program on	
On/Off:	<input checked="" type="checkbox"/>  <input type="checkbox"/> 	
Dim level:	<input type="range" value="94"/> 100 %	

- Device can be assigned to program
- Device can be turn on/off manually
- Simple intensity light setup



# Logimic Light - Locations

- Create a location e.g. hall, building, street, city and assign devices
- Manage the location as a whole
- Assign any program to the location



General Data Attachments Floor plan Notifications

Name:	gw4
Number of devices:	109
Identifier (IPath):	QelproLights/Jenisov_obec/gw4
Online/On-off:	<span style="color: orange;">●</span> <span style="color: orange;">●</span>
Program:	✓ program1 Status: on
Power On/Off:	<span style="background-color: #ffc107; padding: 2px 10px; border: 1px solid #ffc107;">On </span> <span style="background-color: #6c757d; padding: 2px 10px; border: 1px solid #6c757d; color: white;">Off </span>
Change program:	<span style="border: 1px solid #ccc; padding: 2px 5px; display: inline-block;">program1 ▾</span>







# Logimic Light - Indoor Locations


- Upload floor plan of your indoor location
- Drag & drop your devices over floor plan
- Quick identification of any device in floor plan map



# Logimic Light - Programs

- Program is a list of commands in daily, weekly, time cycle
- Astro calendar available
- Assign program to any location or locations

Time events			
Type ↑↓	Date/Time ↑↓	Command name	
day	1:00	75	
day	2:00	50	
day	4:00	75	
day	5:00	ON	
day	22:00	80	
day	23:00	77	

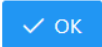



**Edit Command** ×

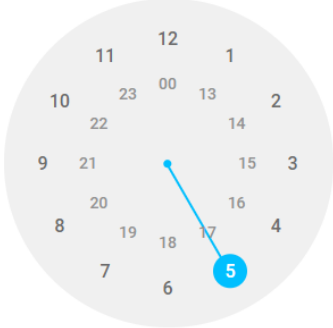
Command  
100



Day  
Monday

Time  
05:00

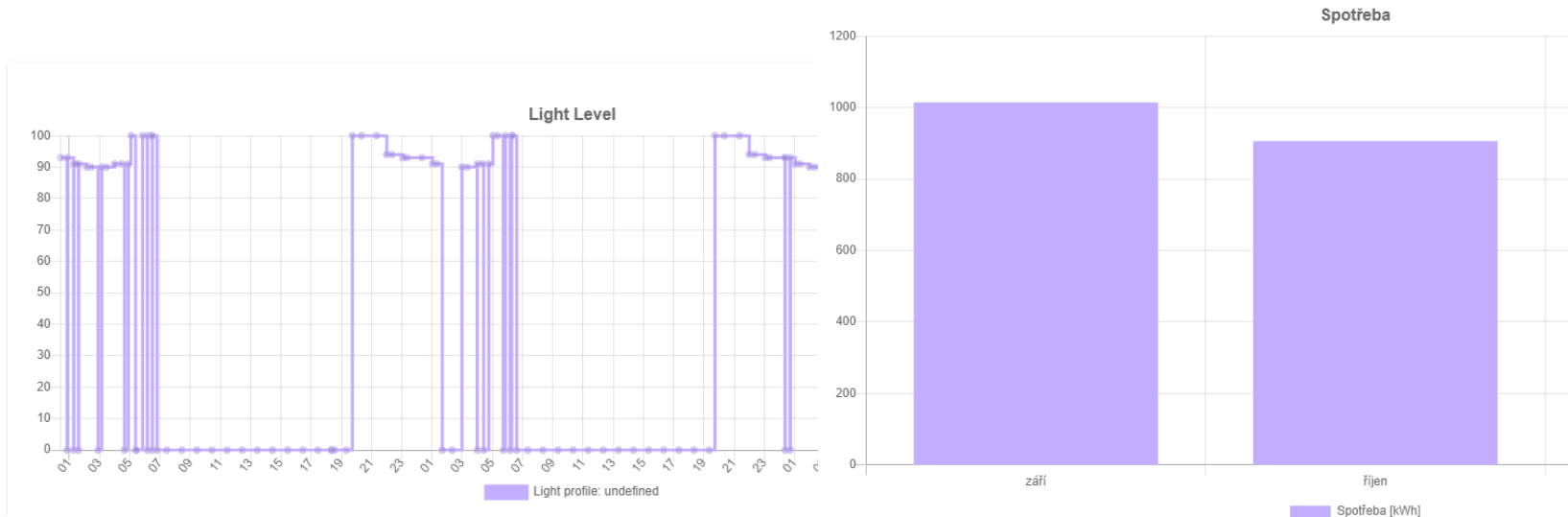
5:00



# Logimic Light - Statistics

- Show lighting profiles of locations or particular devices for any time period
- Export monthly consumption profiles
- Export any data to CSV file



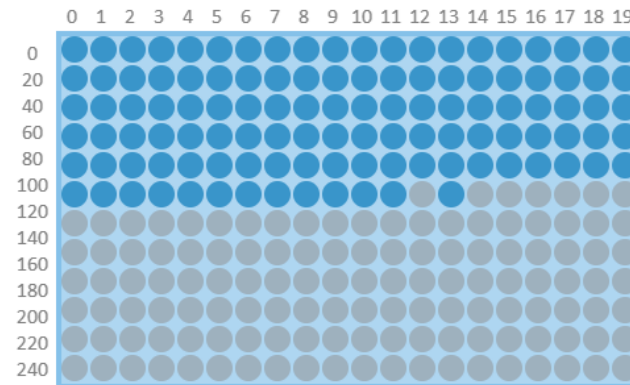
# Gateway hardware

[← Back to Gateways](#)

## Gateway Data

Status:	Online
Vendor, Product:	Rehivotech, Aurora
Serial:	27021777579716
Local IP:	10.141.202.149
Time zone, Sunrise, Sunset:	CEST, 13/09/2021, 05:59:00, 13/09/2021, 19:48:00
Gateway ID:	Rehivotech/Aurora/27021777579716
Channel, StdLp:	41, false
Last update:	13/09/2021, 22:22:15

## Gateway Matrix



[Nodes](#)

[Topology](#)

[Commands](#)

[Messages](#)

## Nodes - lights

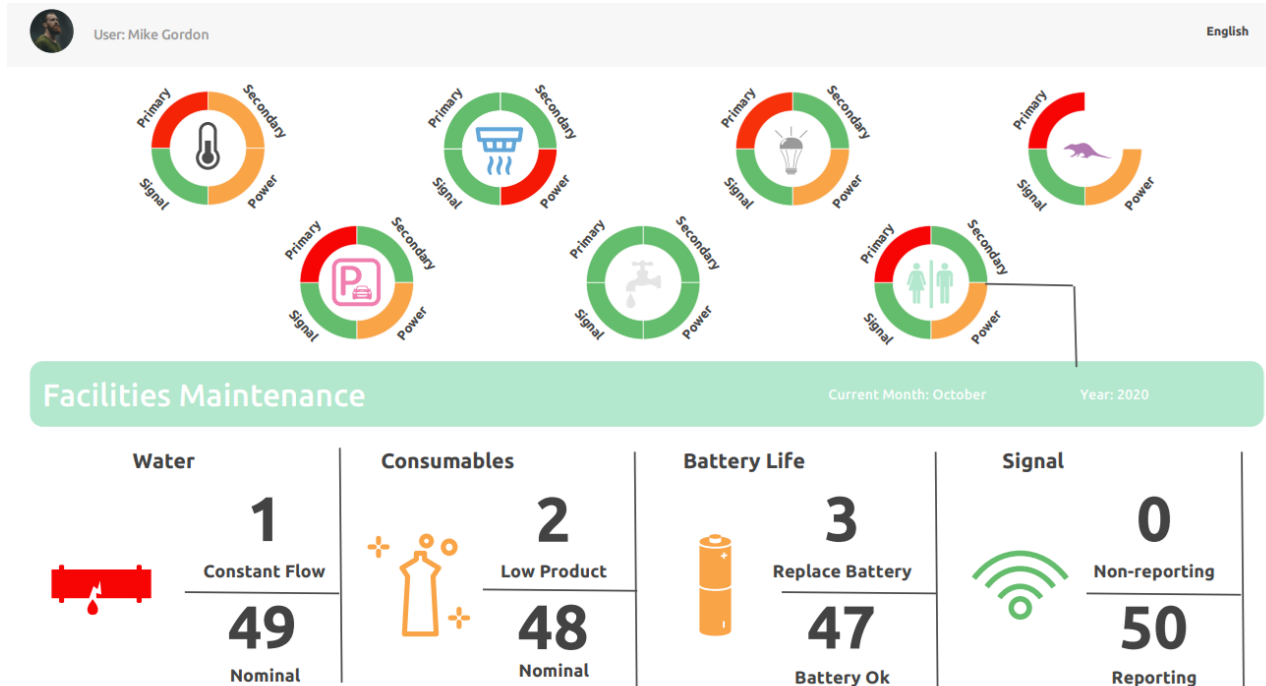
Nodes: 112



nAdr	↑↓	mid	↑↓	disc	↑↓	hwpid	↑↓	hwpidVer	↑↓	osBuild	↑↓	dpaVer	↑↓	prnt	↑↓	zone	↑↓	vrn	↑↓	rsssi	↑↓	ping	↑↓
7		0x8112349C		true		0x0804		274		0x08C8		0x0413		0		1		6		0		N/A	
47		0x81123587		true		0x0804		274		0x08C8		0x0413		9		3		38		0		N/A	
79		0x81123469		false		0x0804		274		0x08C8		0x0413		43		4		71		0		N/A	

# Specific user dashboards

- We provide on demand design of dashboards by specific customer requirements



# Applications



- 1 manufacturer, 3 towns, 5 company complexes
- 12 gateways, 1200 lighting spots



Jirkov

June/2020



Company



Jenišov



Nekmír

5

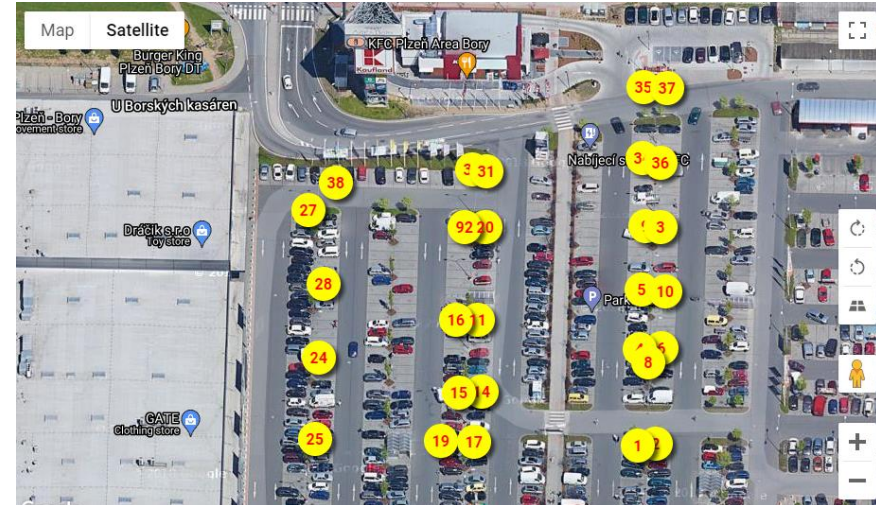
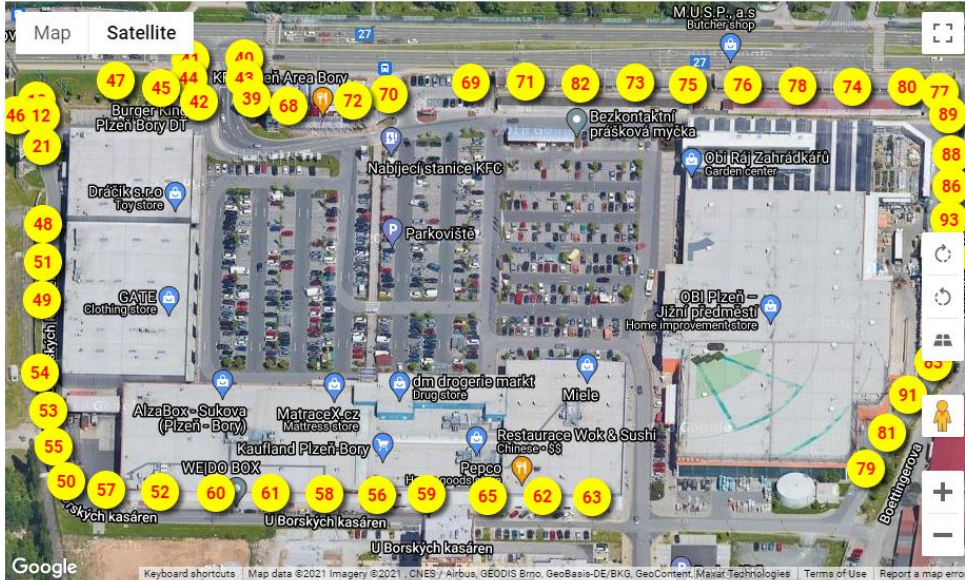
Company arealas

July/2021



# Kaufland area

- 1 gateway, 90 lights
- 3 zones with night lighting programs





logimic  
*We make IoT world*

# iTemp

Logimic, s.r.o.  
[michal.valny@logimic.com](mailto:michal.valny@logimic.com)  
[frantisek.mikulu@logimic.com](mailto:frantisek.mikulu@logimic.com)





# iTemp devices

Sensor offline

Battery

Placement

Temperature

Humidity

Last seen

Sensors								Global Search	
<input type="checkbox"/>	Battery [V] ↑↓	Name ↑↓	Location ↑↓	Gateway ↑↓	Temp [°C] ↑↓	Hum [%] ↑↓	Last update ↑↓		
<input type="checkbox"/>	3.59	tsens-48	obývací pokoj	GW1	23.94	40.5	23/02/2021 14:03		
<input type="checkbox"/>	3.46	tsens-52	unknown	GW1	5.31	72.5	23/02/2021 14:03		
<input type="checkbox"/>	3.59	tsens-49	sklep	GW1	22.38	40	23/02/2021 14:02		

# iTemp Location



Upload plan

Min/max. battery

General Data Floor plan



3.6

3.6

22.1 °C  
Temp min.

23.8 °C  
Temp max.

40.5 %  
Hum min.

41 %  
Hum max.

Place sensor over map

Min/max. Temperature,  
Humidity

# iTemp Sensor Detail

*Temperature* *Battery* *Humidity* *Guarding of min/max values*

View Map Location Data Notifications

The interface displays a 3D model of the iTemp sensor on the left. Below it are three circular gauges: Temperature (22.38°C), Humidity (40%), and Battery (3.59V). On the right, the 'Limits' section allows configuration of minimum and maximum values for Temperature and Humidity, with 'Apply' and 'Cancel' buttons.

Parameter	Minimum	Maximum
Temperature	5	30
Humidity	0	0

Temperature: 22.38°C  
Humidity: 40%  
Battery: 3.59V

Limits

Temperature minimum: 5  
Temperature maximum: 30  
Humidity minimum: 0  
Humidity maximum: 0

Apply Cancel

# iTemp Statistics

Day Days

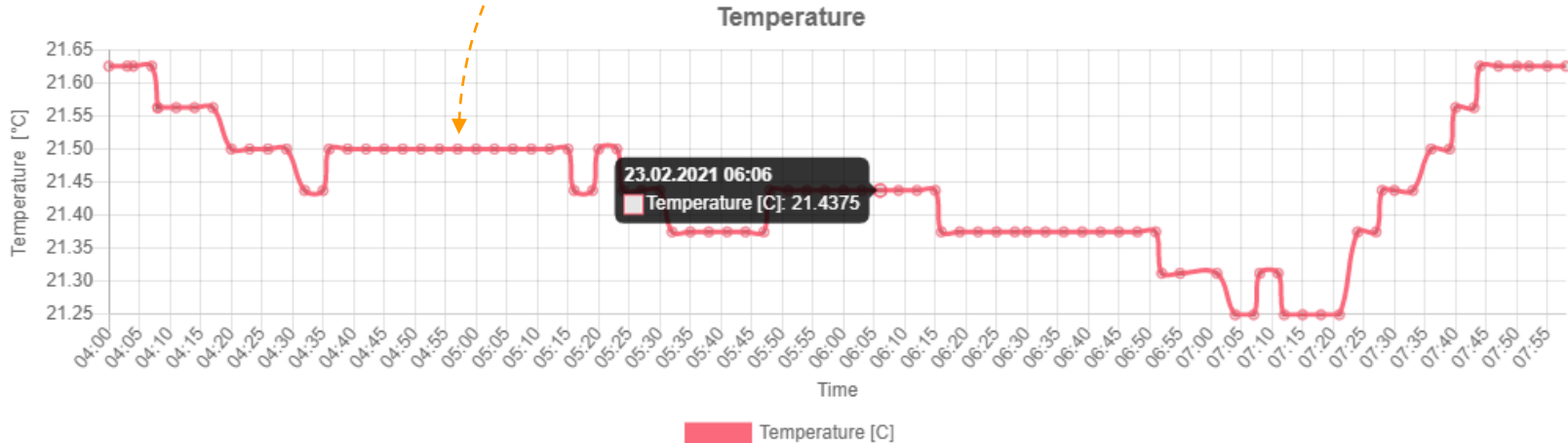
Select Day of Days

2min . Measurement Frequency

Time Interval

day 23.02.2021

Time interval 4-8



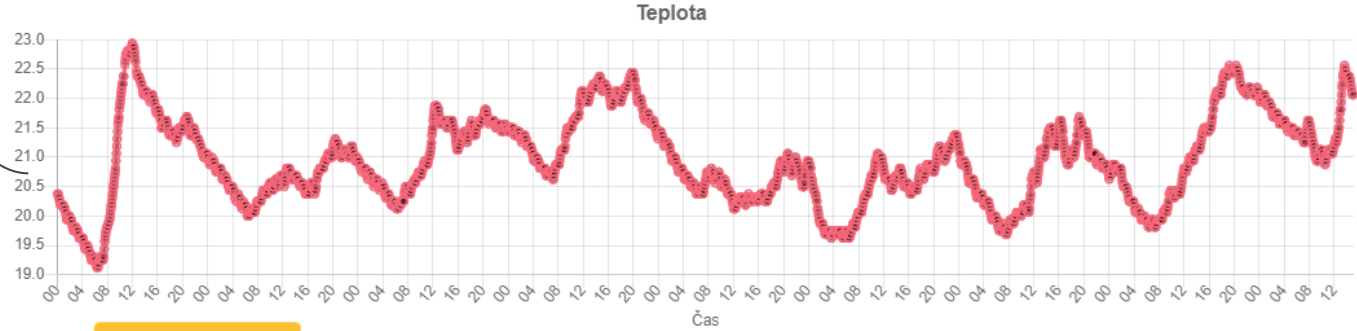


# iTemp Statistics

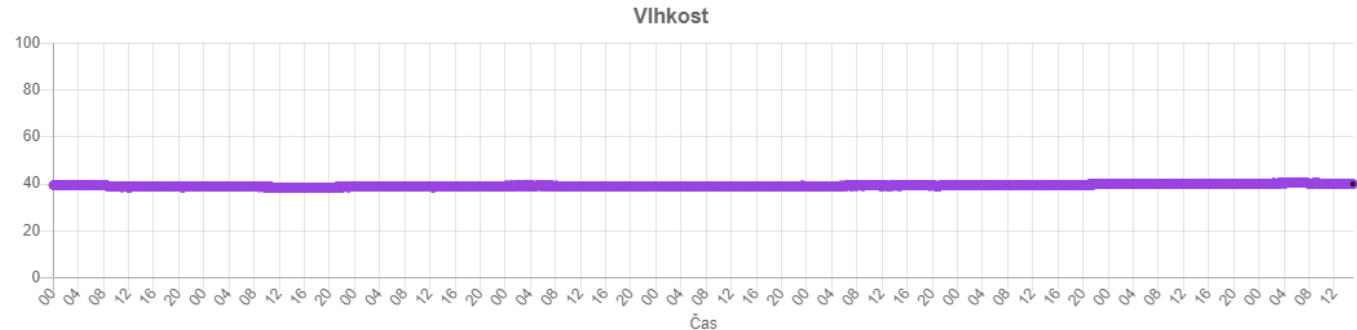
Dny 15.02.2021 - 25.02.2021

2 years statistics

Export to CSV



Export



# iTemp for Swimming Pools

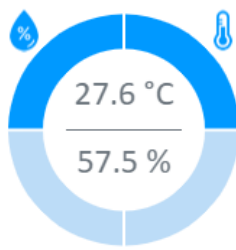
Dashboard

Tabulka

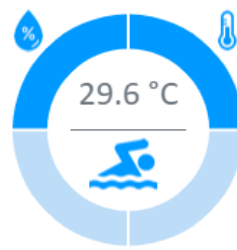
Lokace



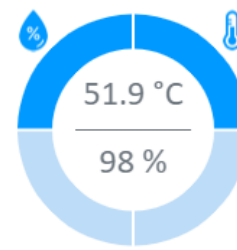
Bazén (voda)



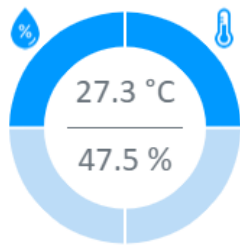
Bazén (vzduch)



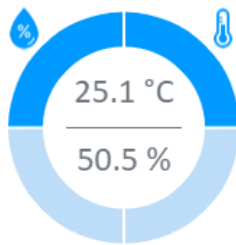
Dětský bazén



Pára



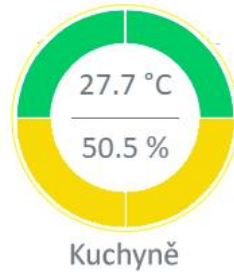
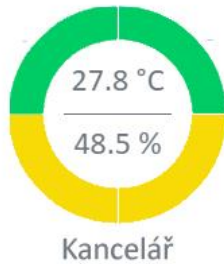
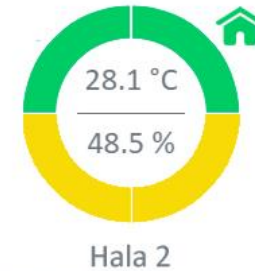
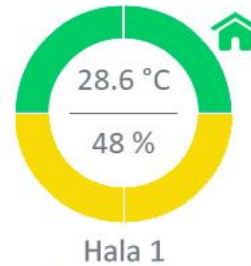
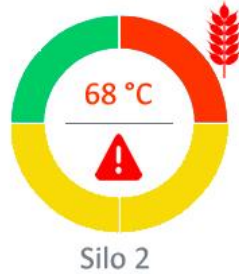
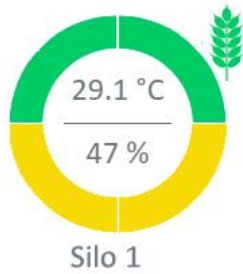
Odpočívárna



Restaurace

# iTemp for Agriculture

Dashboard





**logimic**  
*We make IoT world*

# Smart City (ACADA)

Logimic, s.r.o.  
michal.valny@logimic.com  
frantisek.mikulu@logimic.com



# Smart City - Vize

Jednoduchý intuitivní nástroj pro zobrazení dat z různých senzorů.



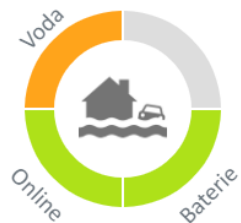
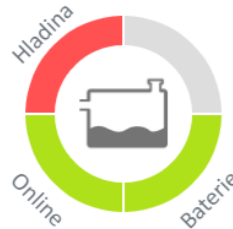
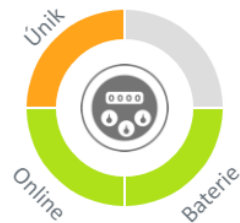
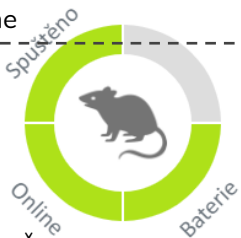
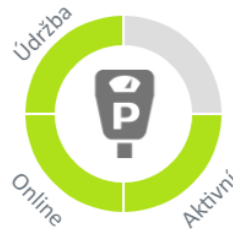
michal.valny@logimic.com

logimic  
We make IoT world

Všechny senzory hlásí požár

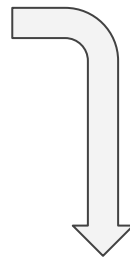
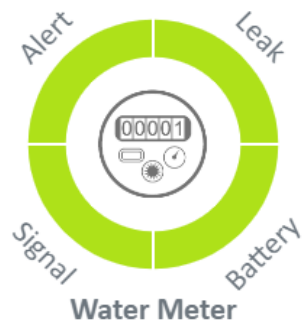
Všechny senzory v online

Některé senzory hlásí kouř





# Level2 - Kpi



Water Meter

High Consumption

	0 Alert
	2 OK

Continuous Flow

	0 Alert
	2 OK

Intermittent Leak

	0 Alert
	2 OK

Minor Backflow

	0 Alert
	2 OK

Major Backflow

	0 Alert
	2 OK

Irregular Usage

	0 Alert
	2 OK

Soft Disconnect W/Usage

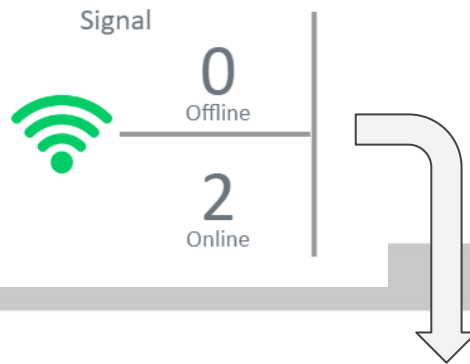
	0 Alert
	2 OK

Non-Billable Read

	0 Alert
	2 OK



# Level 3 KPI



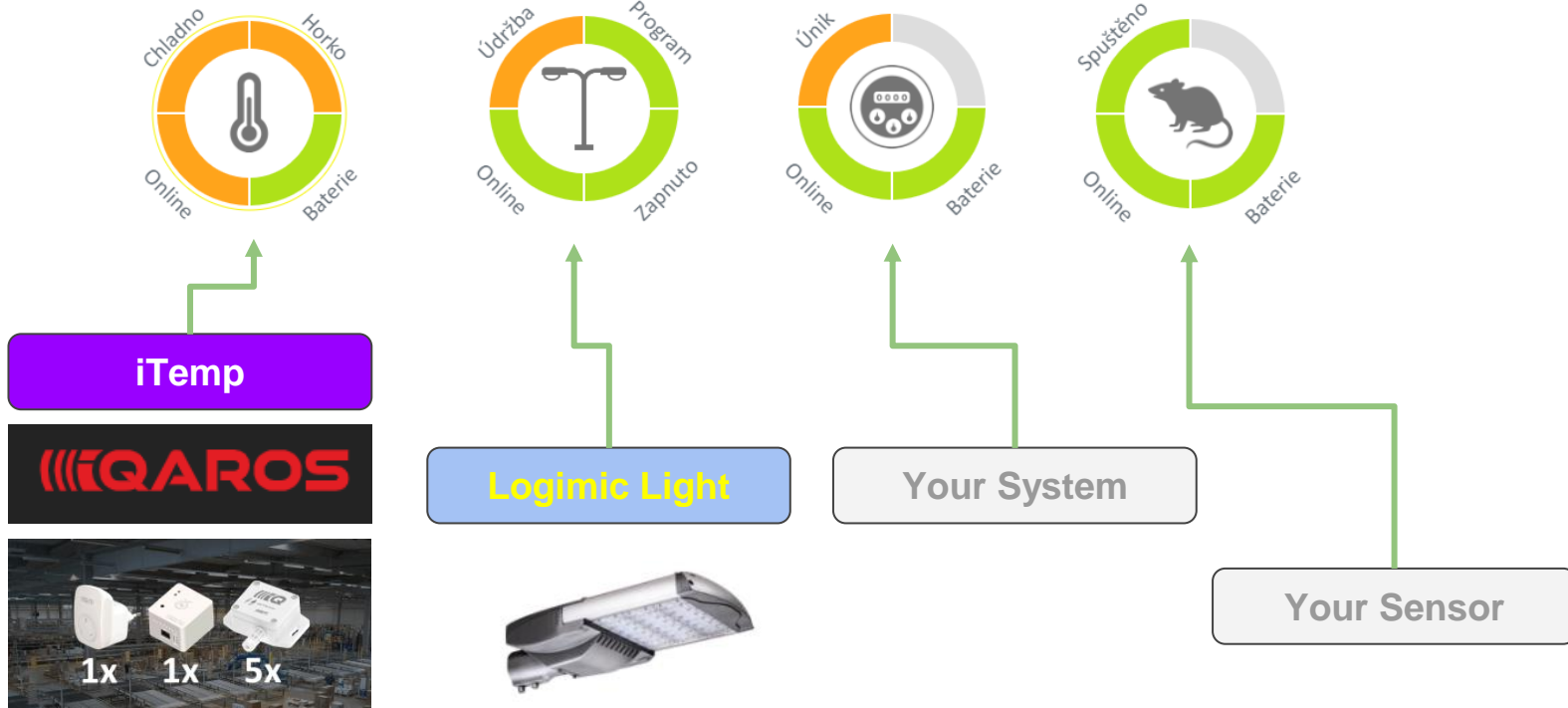
Device type ↑↓	Alert Type ↑↓	Device ID ↑↓	Account ↑↓
Water Meter	Continuous Flow	70b3b514900b075c	875862
14040 Kenilworth St	Waverly	NE	684
Harry Sullivan	09/14/2021	7:28:59 AM	Action
Water Meter	Continuous Flow	70b3b514900b0756	875
10930 N 141st St	Waverly	NE	684
Sarah Smith	09/08/2021	4:13:08 AM	Action

**ACTION** [X]

- More Detail [📄]
- Create Service Request [🔧]
- Run Report [📊]
- Send Email [✉️]

**Water Meter** [X]  
Harry Sullivan  
ID: 70b3b514900b075c  
Alert: Continuous Flow  
Last Service Reported: 9/14/2021, 7:28:59 AM  
Service Request Status: opened  
Service Request Number: <#>

# Sensors & Systems connectivity





**Thank you for Your attention!**

**logimic**  
*We make IoT world*

Logimic, s.r.o  
[www.logimic.com](http://www.logimic.com)

[michal.valny@logimic.com](mailto:michal.valny@logimic.com)  
+420 772 728 599