



IQRF Interoperability

IQRF technology

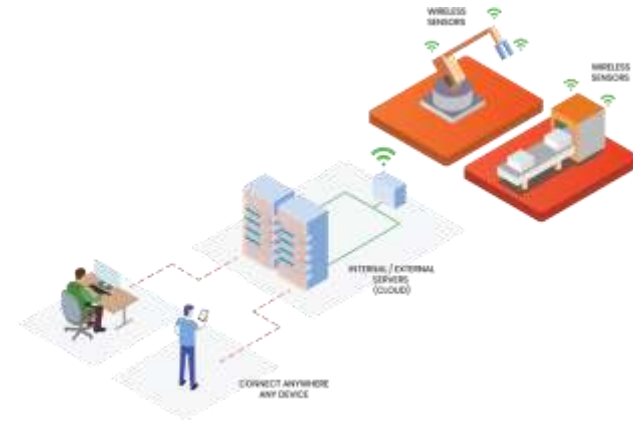
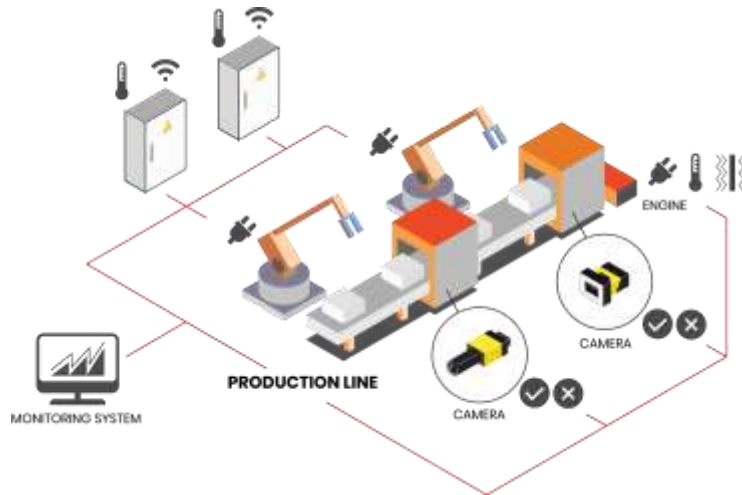
- Developing of wireless sensor unit for industrial applications

Data collection + Machine vision systems

- External sensors
- OPC communication
- Installation
- Programming
- Commisioning

Industry 4.0 applications

- Suggestion of solution
- CMS
- Process visualization

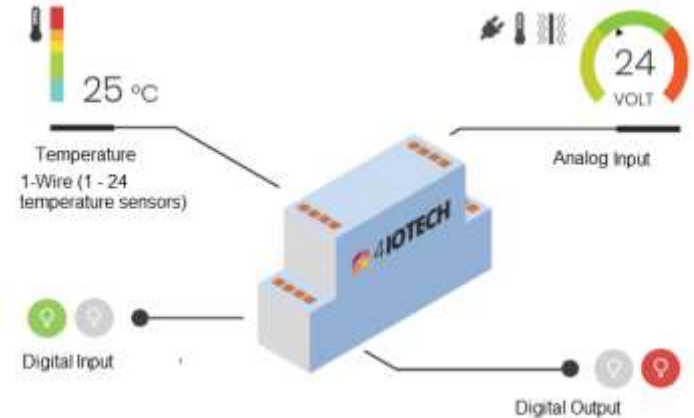




- Wireless sensor unit for industrial applications

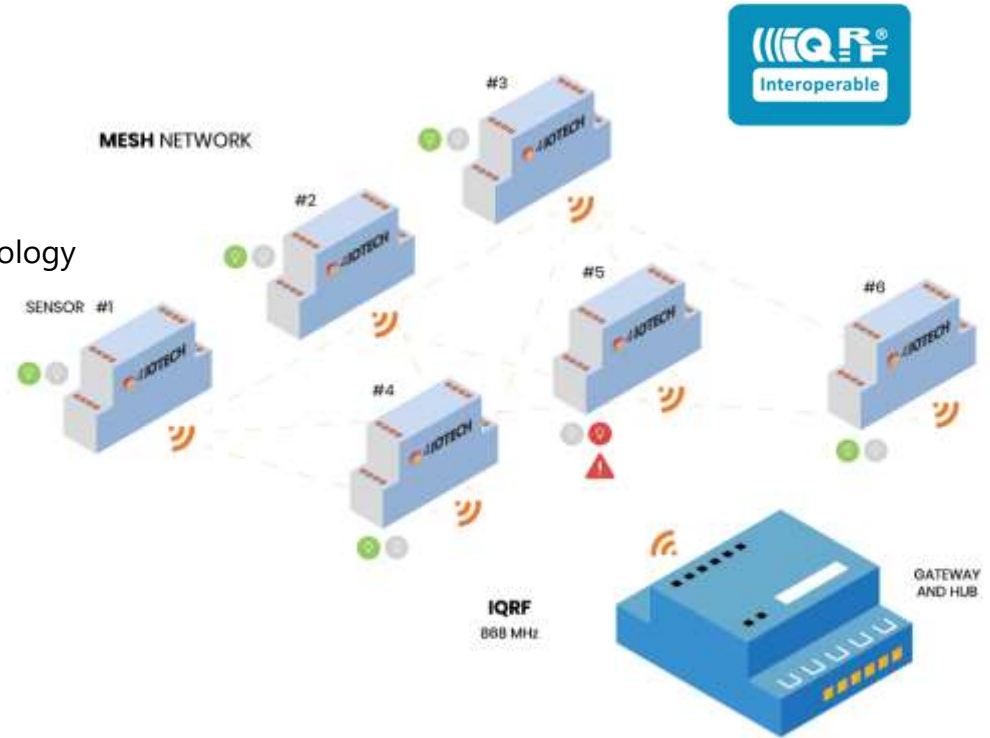
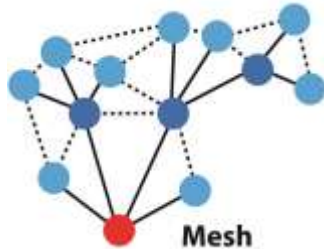


- Wireless technology (868 MHz)
- Power supply 24VDC
- 1x DI, 1x DO (galvanically isolated)
- 1x AI – choice of range:
 - 0 – 40 VDC
 - 0 – 10 VDC
 - 0 – 20 mA
- Interface 1-Wire (RJ-45)
- Device size 1 DIN module

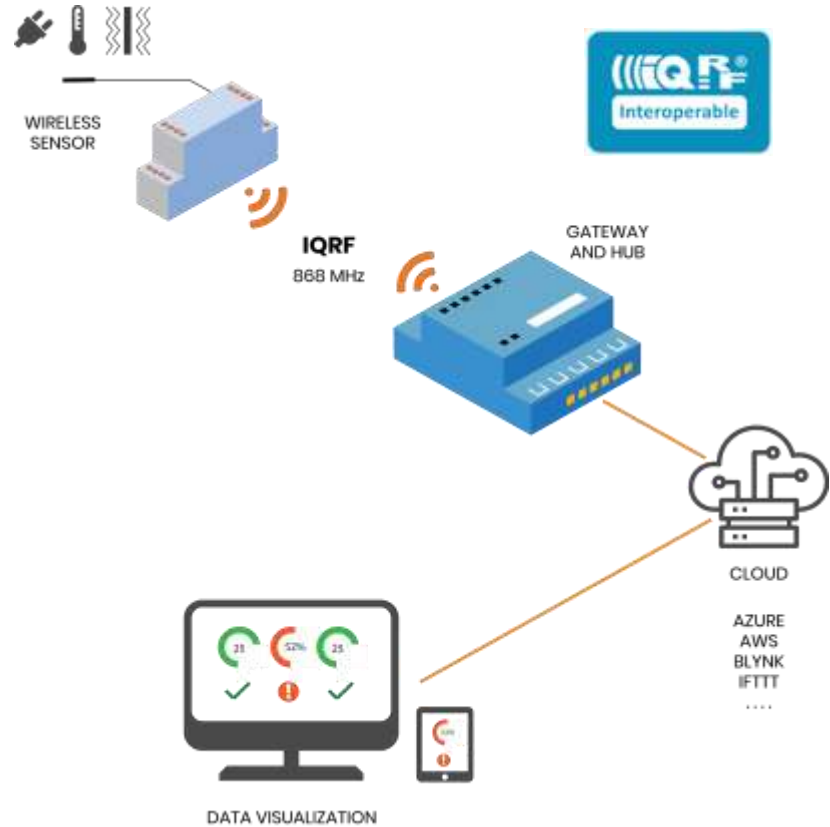


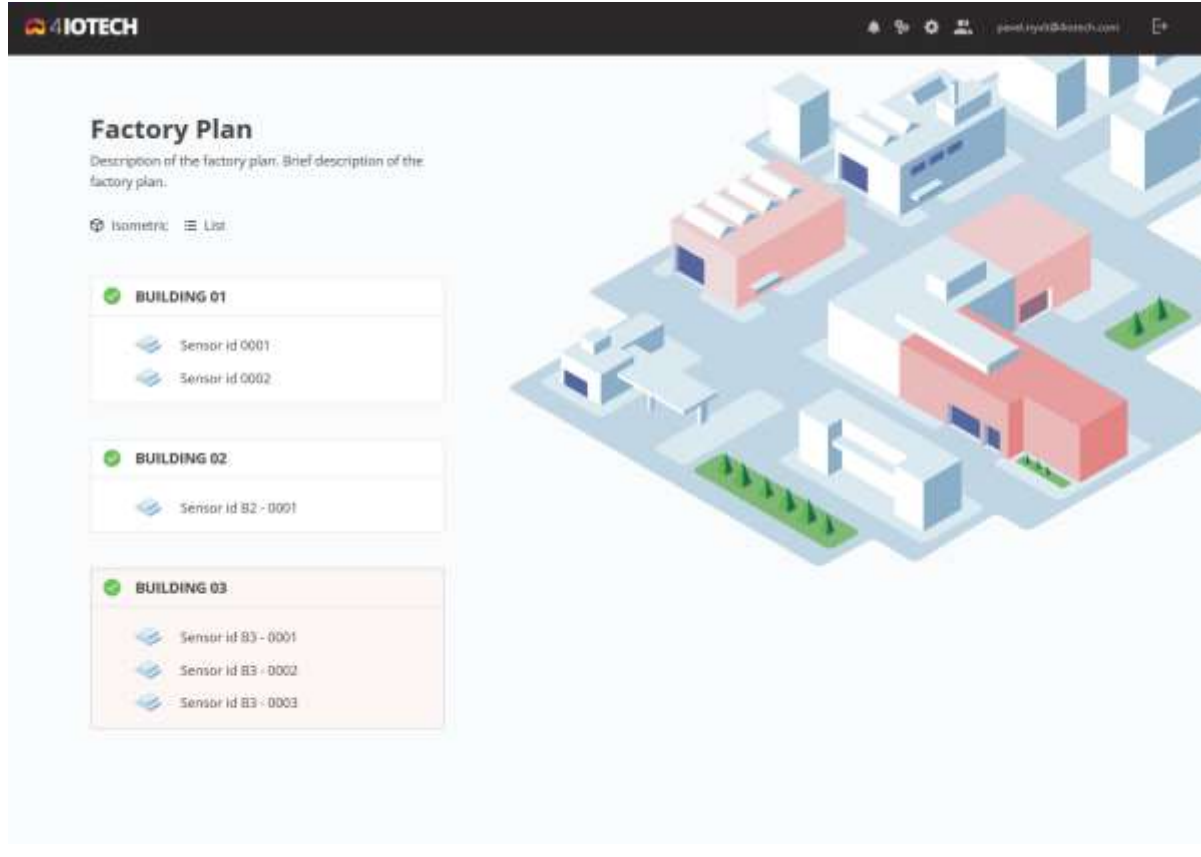
Sensor development and production is only carried out in the Czech Republic

- Wireless sensor unit for IoT applications
 - Own processor for data processing and peripheral operations
 - Wireless transmission based on IQRF technology
 - Encrypted AES-128 communication
 - Support MESH Network



- REAL EXAMPLES





Factory Plan

Description of the factory plan. Brief description of the factory plan.

Isometric List

BUILDING 01

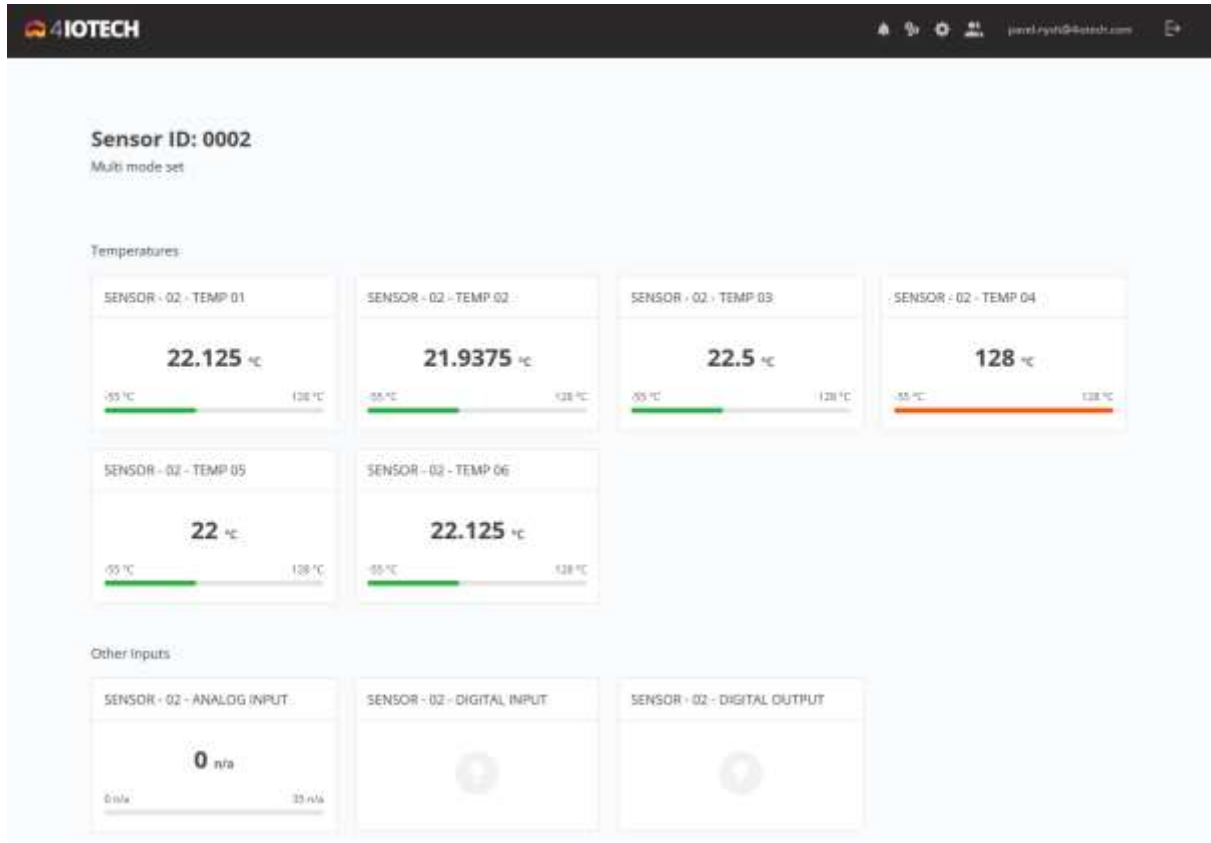
- Sensor id 0001
- Sensor id 0002

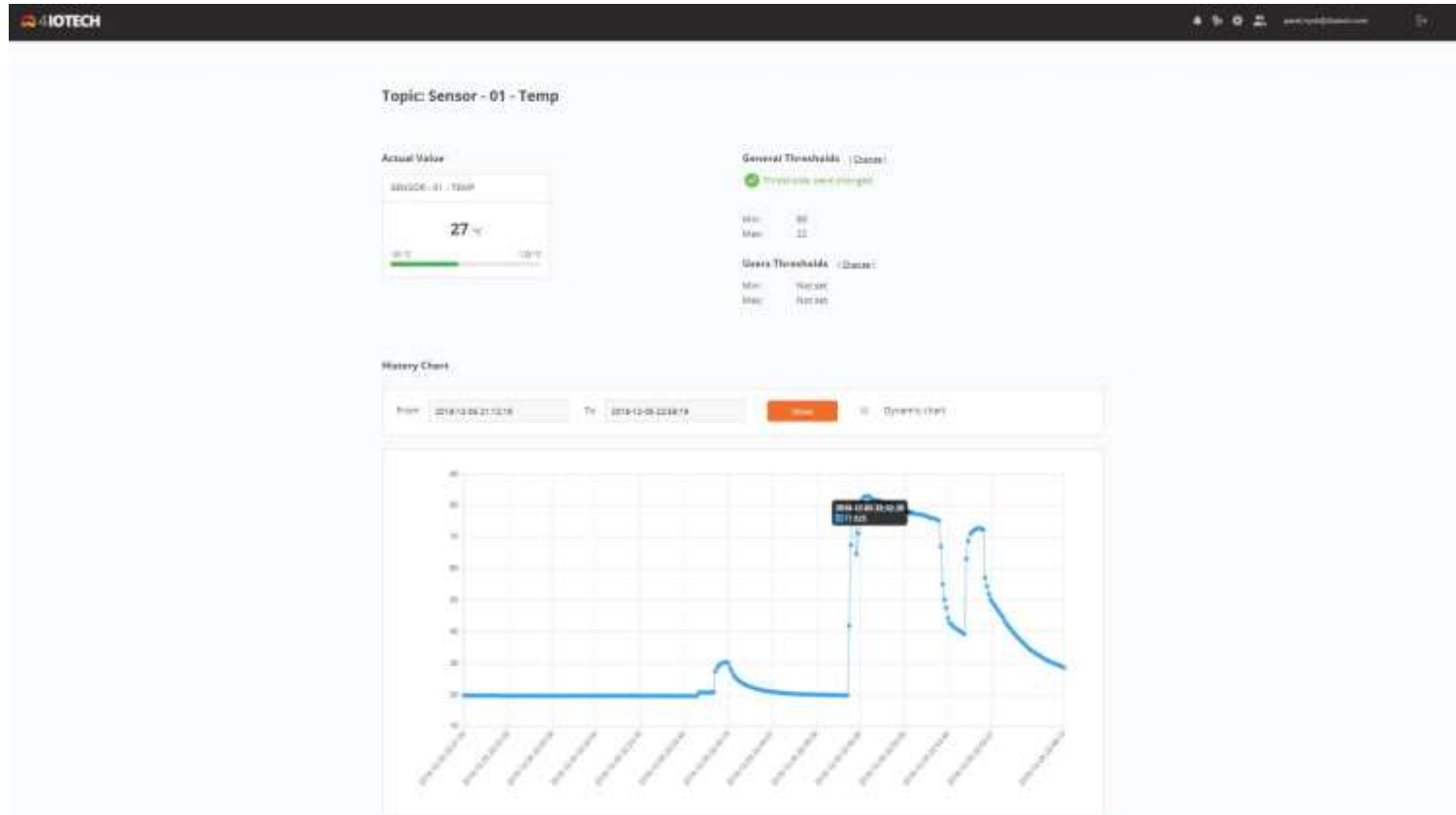
BUILDING 02

- Sensor id 02 - 0001

BUILDING 03

- Sensor id 03 - 0001
- Sensor id 03 - 0002
- Sensor id 03 - 0003









Thank's for your attention