



Who we are:

- Engineering company – unique solutions provider
- Producer of the control system SW + HW
- Supplier - contractor - key turn delivery

What we do:

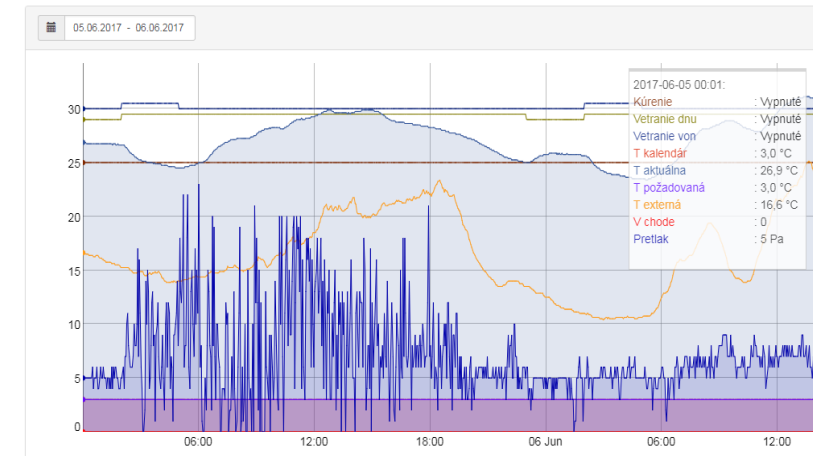
- Saving solutions based on EPC conditions, guaranteed savings
- Intelligent systems for heating, cooling, ventilation in the big volume spaces (BVS)
- solutions for administrative and public buildings, schools hotels etc.
- Solutions of the control proceses and used equipments
- Custom solutions – technological coal defrosting, frost protection in industry production based on infrared technologies

AGS III – intelligent control system for operating BVS

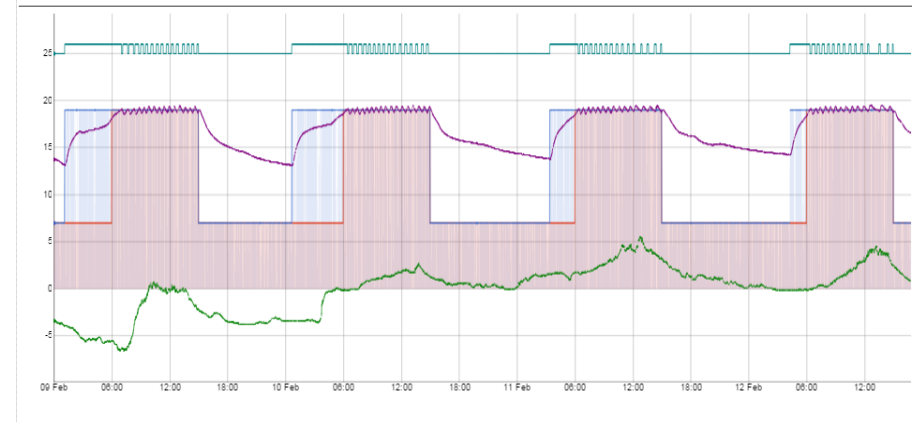


- Control system and monitoring system RS AGS (charts)**

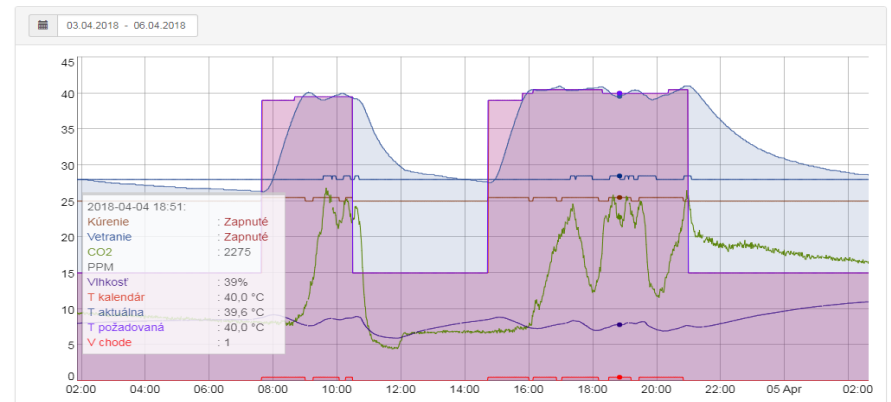
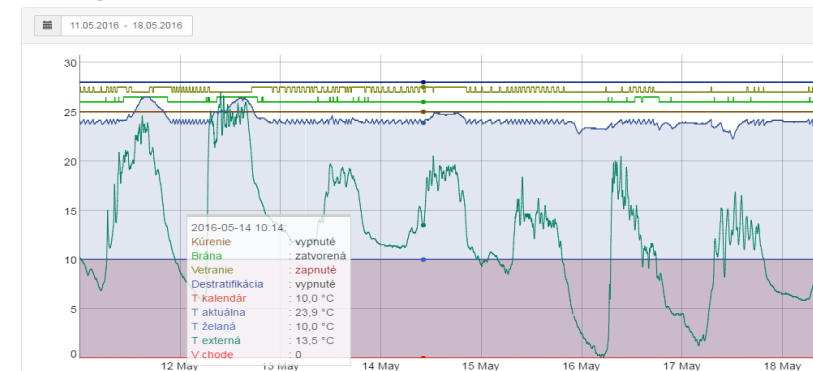
Prehľad - graf



Zóna 1.05



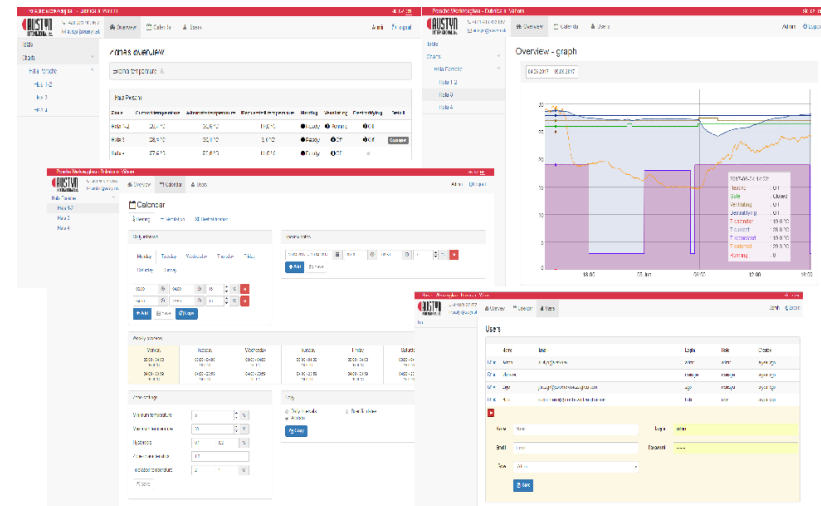
Prehľad - graf



Products and system components

- **Control and monitoring system AGS**
 - Server(application) – Gateway(communication) – nodes(actuators, sensors)

or SBC with IQRF module (application + communication) – nodes(actuators, sensors)
- Web application based GUI (responsive design)
- Scheduler
- Individual control of each device
- User management
- Smart functions (Intime, Outtime, Demax)
- [Demonstration](#)



Referencies



Hotel Patria – Vysoké Tatry, Štrbské Pleso



- **MAG RA** - Wireless digital thermostatic radiator head

- Radiator valve control
- Automatic valve adaptation
- Internal temperature sensor
- Wired external temperature sensor (optional)
- Anti-calc and frost protection
- Opened Window protection
- Battery powered (2x Li-ion 1,5V AA) with low voltage alert
- Anti-vandal protection kit (optional)

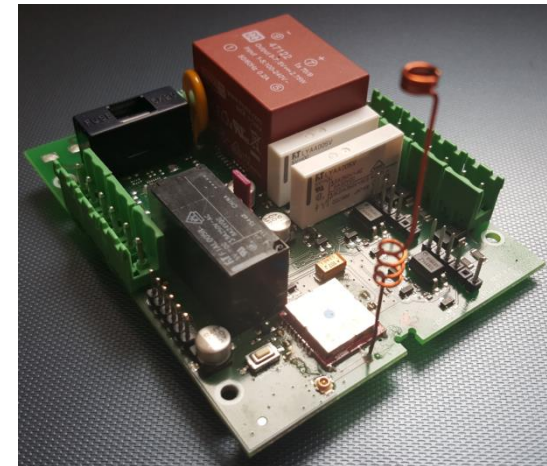


- **MAG CB (MAG CO) control board**

Module is designed as control board for various devices eg. Heaters, lights, pumps, servo-drive etc.

Board is powered form mains and contains following:

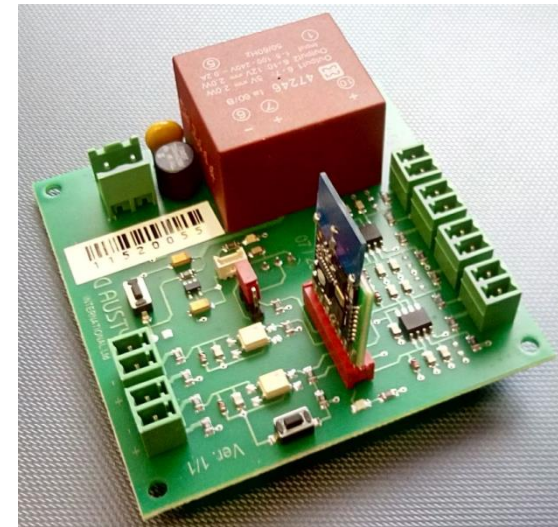
- 2(3) relays (5A/230VAC/30VDC) with LED indication
- relay with 8A/230VAC(10A/230VAC) output or open/close contact with optional consumption metering
- DALLAS (DS18B20+) onboard or external – jumper selectable
- 2(1) digital inputs - 0VAC/230VAC or open/close selectable
- DAC 1 OUT (0 - 10V) 5bit resolution
- Bonding button with LED indication
- Reset button (not DCTR module reset) with LED indication
- DCTR-56Dx or DCTR-76Dx module



- **MAG ME measuring board**

Ready to be connected with various sensors, meters and detectors in order to work as measuring board for physical quantities such as temperature, humidity, gas detection, pressure, occupancy illumination etc. Board is powered from mains and contains the following:

- DALLAS (DS18B20+) onboard or external – jumper selectable
- 4 ADC inputs (0-10V) 8bit resolution
- 2 Digital inputs - 0VAC/230VAC or open/close selectable
- Bonding button with LED indication
- Reset button (not DCTR module reset) with LED indication
- Slot for DCTR-56Dx or DCTR-76Dx module



Thank you for your attention

&

we looking forward for future cooperation