



Alliance

# EASY and AFFORDABLE i4.0 pilots

**IQRF case studies with BigClown Digital Maker Kit**



**TOMAS MORAVA**  
Co-Founder **HARDWARIO**



**HARDWARIO**

WE TRANSFORM THE **IoT**  
**IDEAS**  
INTO THE  
**REAL BUSINESS**

ŠKODA



T | P | C | A

e-on



hbreavis



vodafone

varroc  
EXCELLENCE



HARDWARIO  
**BLOX**



**YOUR IOT  
DEVICE  
IN JUST 3  
MONTHS!**

FAST PROTOTYPING & PROOF OF CONCEPT

## PLATFORMS

Ready To Customize

IoT Kit



Outdoor



Indoor



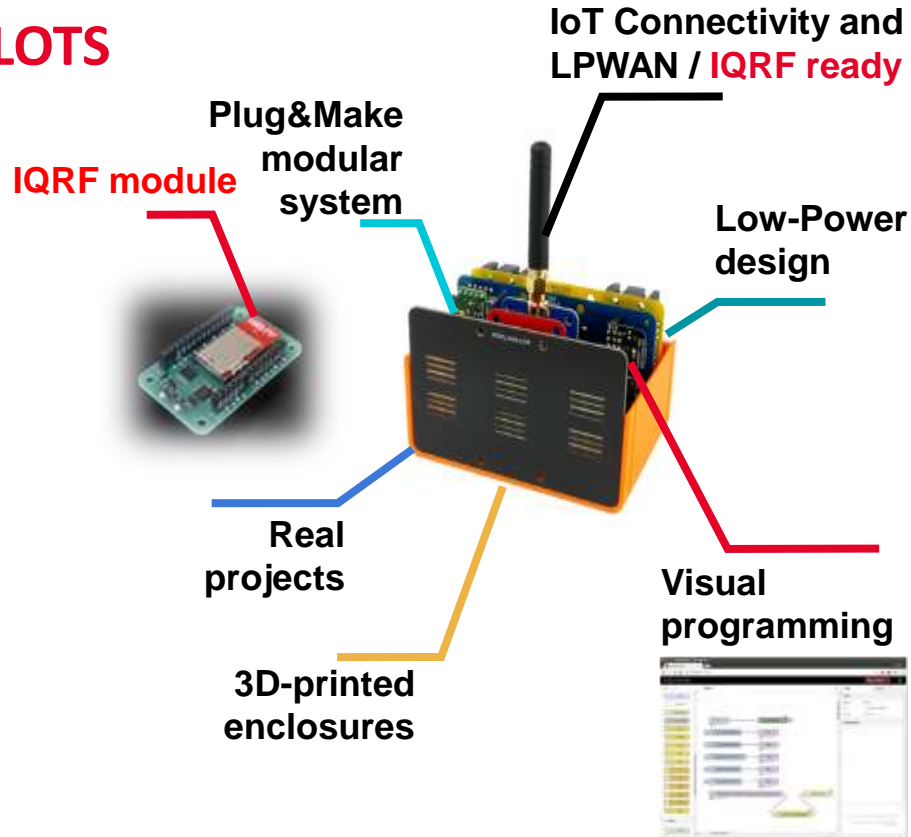
Tracking



## IoT KIT for i4.0 PILOTS

- Hardware
- Software
- Learning Resources
- Support

- Electronics
- Programming
- IoT
- Big Data
- 3D Printing



## COOPER

- Indoor IoT Multisensor
- **IQRF** / NB-IOT / LORA / Sub-GHz
- BLE Communication
- Low-Power (3x AA Alkaline bat)
- Variety of sensors
  - TEMPERATURE + HUMIDITY
  - CO2
  - VOC
  - ACOUSTIC NOISE
  - MOTION
  - LIGHT INTENSITY
  - SHOCK/TILT
- Versatility



## CHESTER

- Outdoor IoT Unit
- NB-IoT & BLE Communication
- Low-Power (1xD Lithium BATTERY)
- Temperature + Humidity
- Shock/Tilt
- GPS
- EXTERNAL SENSORS
  - SOIL MOISTURE
  - TEMPERATURE
  - pH
  - ...





## BONER

Outdoor IoT Unit

NB-IoT / LTE CatM1 Communication

Low-Power (4xAAA Alkaline BATTERIES)

Temperature + Humidity

Shock/Tilt

GPS / GNSS accurate position

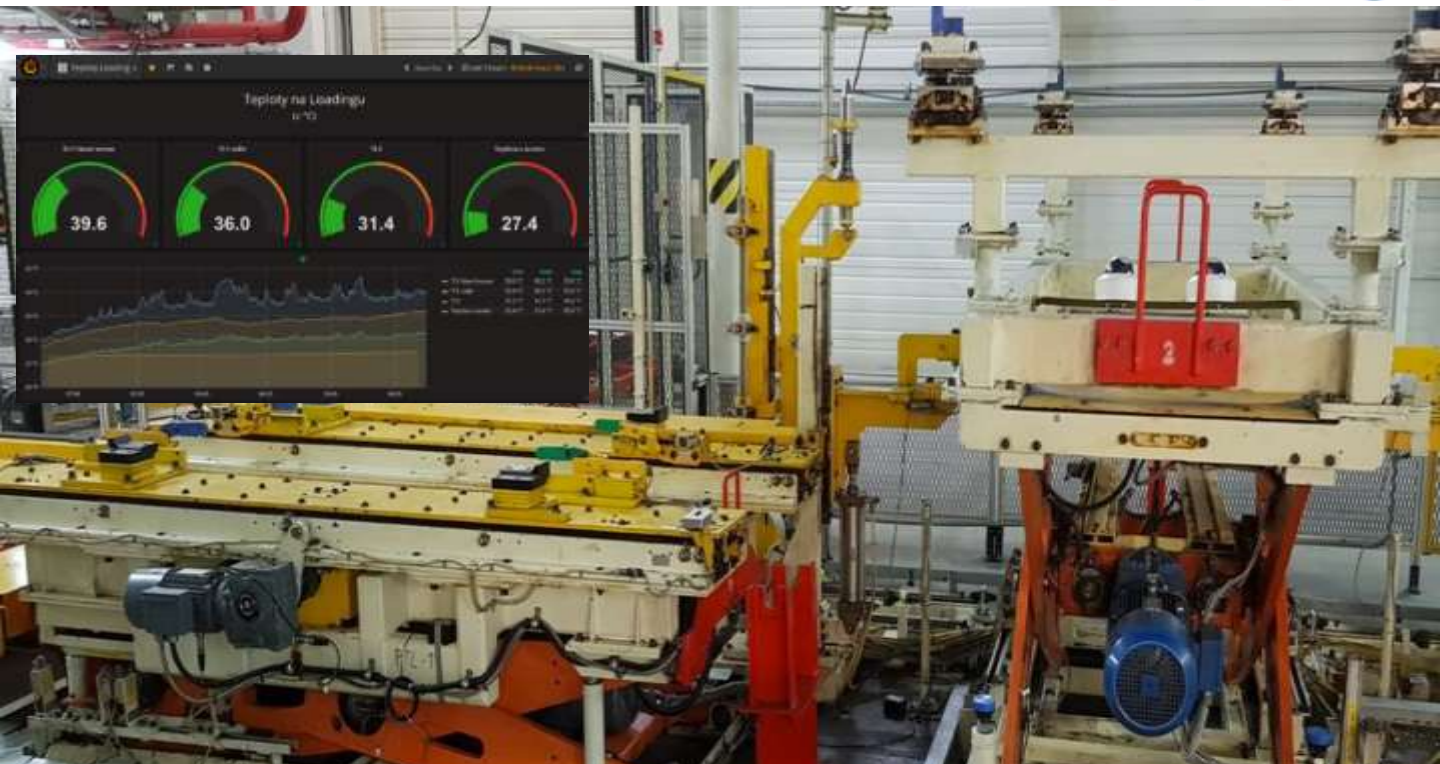


## ... and many more

- DRONE TRACKING
- PREDICTIVE MAINTENANCE
- ANDON BUTTON
- WORKFLOW MONITOR
- INDUSTRIAL BACKUP SYSTEMS
- PERSONAL ALARM
- SMART WINEYARD
- BARK BEETLE MONITOR
- BEEHIVES MONITOR



# BIGCLOWN for Industry 4.0



INDUSTRY 4.0 PILOT - PREDICTIVE MAINTENANCE

# ANDON BUTTON



IQRF ready deployment for long production lines and warehouses

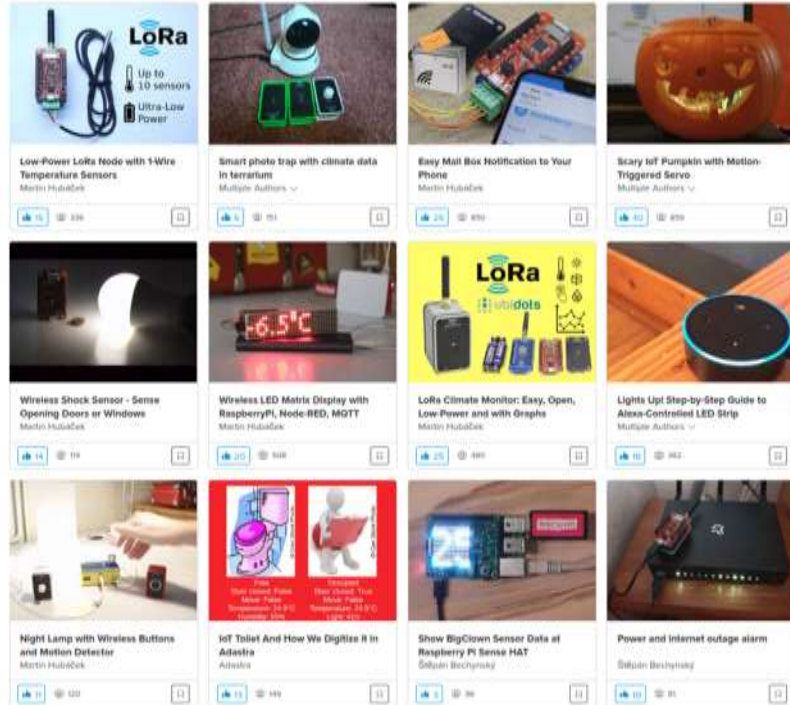
## INTEGRATIONS

- MS AZURE IoT CENTRAL
- AWS
- GRAFANA
- UBIDOTS
- BLYNK
- OPERATORS
- PARTNERS
- Custommed Data Feed





# BIGCLOWN INSPIRATIVE PROJECTS



INSPIRING  
THE **INVENTORS**  
OF TOMORROW



[tomas.morava@hardwario.com](mailto:tomas.morava@hardwario.com)

+420 737 250 187

LIBEREC, Czechia

LONDON, UK



**THANK YOU!**