



IQRF Gateway Daemon Extensions

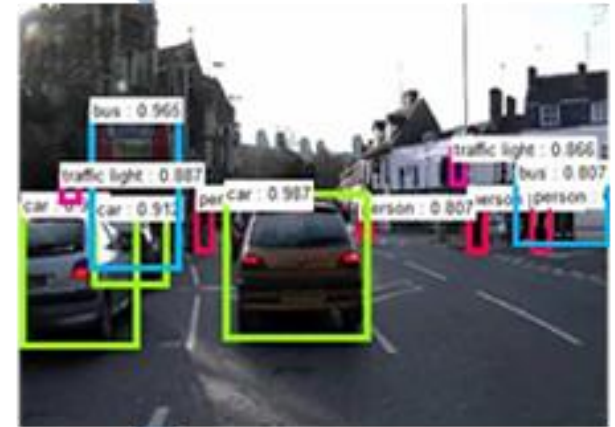
Michal Valný

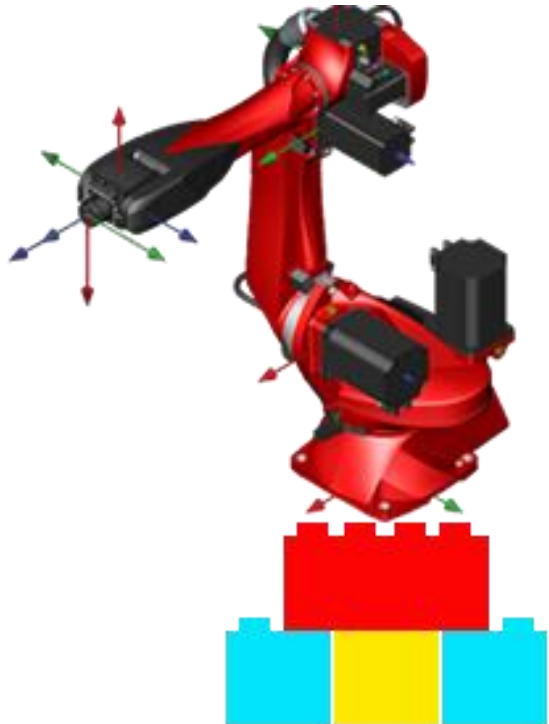
František Mikulů

IOT

Industry 4.0

logimic
Software systems



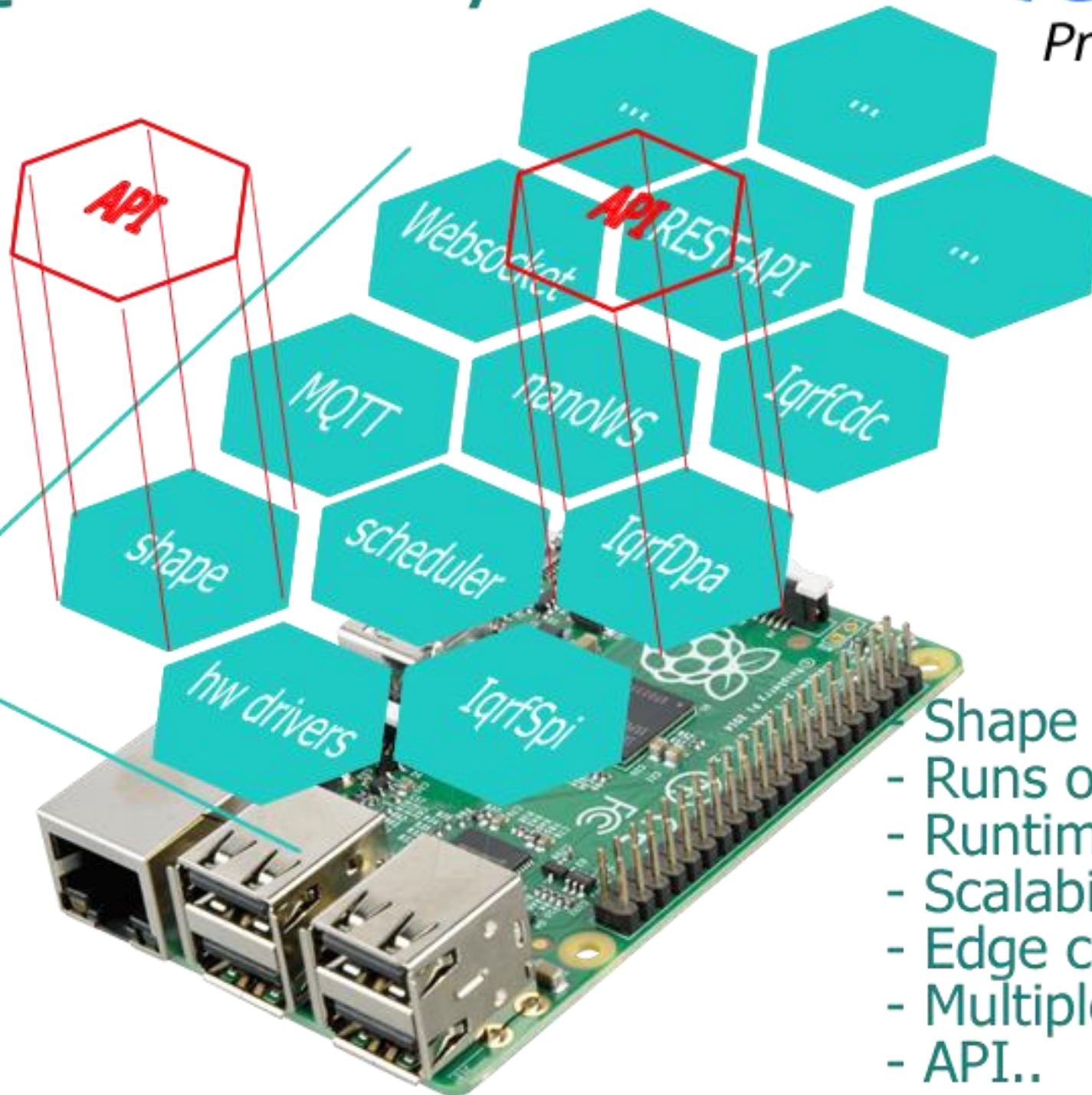


Logimic
Vision



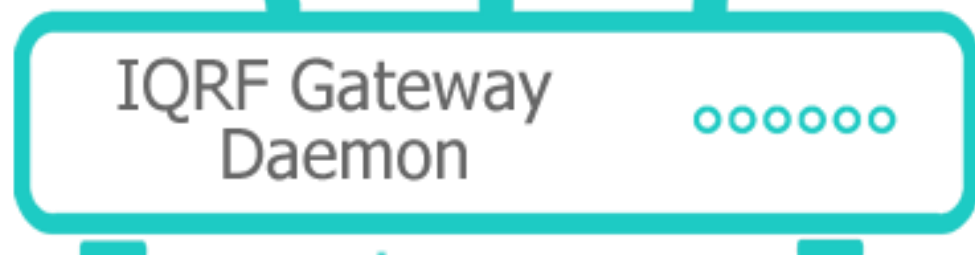
IQRF Gateway Daemon

Logimic
Projects

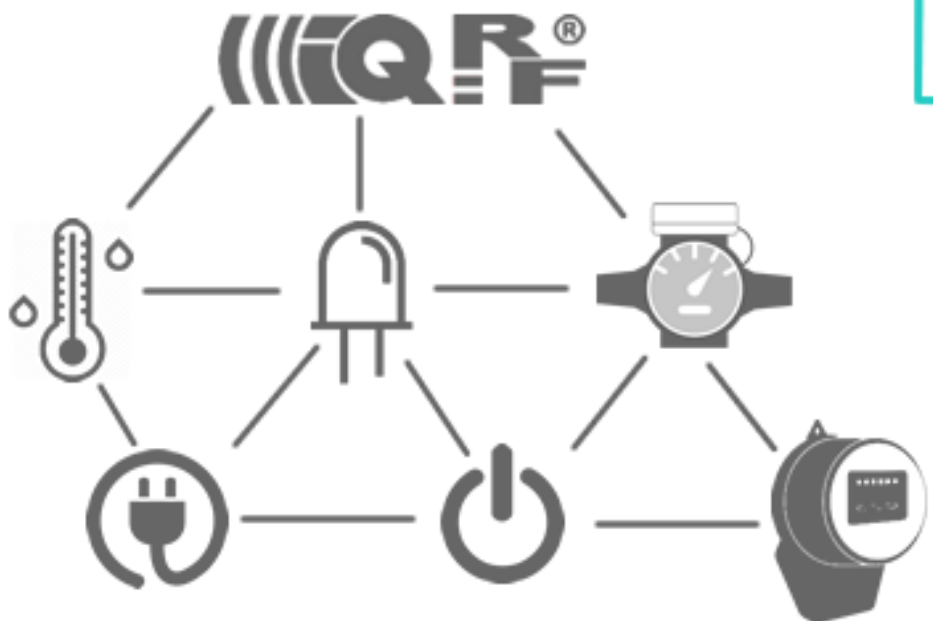


- Shape modular system
- Runs on any computer
- Runtime configuration
- Scalability
- Edge comp. and logic
- Multiple connectivity
- API..

IQRF Gateway Daemon



Integration



IQRF Gateway with Mozilla IoT

The screenshot shows the Mozilla Things Gateway web interface. At the top, the browser tab is labeled 'Things Gateway' and the address bar shows 'localhost:8080/things/'. The main content area features a central 'THING' node connected to two data points: 'node' with a value of '0' and 'temperature' with a value of '20.1 celsius'. Below this, an add-on card for 'iqrf-adapter' is displayed, version 0.3.2, by Logimic. The card includes a puzzle piece icon and buttons for 'Remove' and 'Disable'. The Mozilla IoT logo is visible in the bottom left corner.

Things Gateway

localhost:8080/things/i

←

iqrfEmbedThermometer-0

0

node

THING

20.1
celsius

temperature

iqrf-adapter 0.3.2
IQRF adapter add-on for Mozilla IoT Gateway
by Logimic

Remove Disable

moz://a
IoT

Q&A

Software integrations

logimic

Customer projects

IOT Gateways

Software systems

Control systems

Special algorithms

Speech & Image recognition

HOW STANDARDS PROLIFERATE:
(SEE: A/C CHARGERS, CHARACTER ENCODINGS, INSTANT MESSAGING, ETC.)

