

Automatic Wall-mounted Thermostatic Washbasin Tap - for Remote Access IQRF SLU 25Q



SLU 25Q



SMART SANITARY
ultimate water management

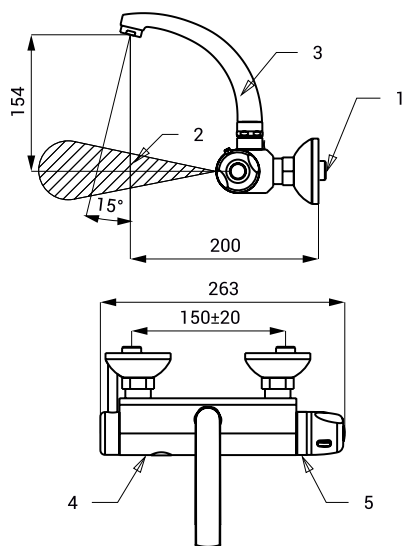
Characteristics



- including IQRF communication module
- economical aerator, rate of flow 6 l/min
- hygienic flush
- suitable for medical facilities
- swivel faucet
- is destined for cold and hot water, temperature is regulated by thermostatic mixer
- safety fuse against scalding
- stop flowing of hot water till 1 s in case of cold water failure
- pressure of hot and cold water must be same
- water is flowing as long as hands are in the active range
- water stops flowing after removal of hands from the active range of sensor after adjustable time delay (can be set in range 0,25 – 7,75 s)
- function of automatic water stop after 5 minut of continuous flow
- START/STOP program
- parameter adjustment using by the remote control SLD 03 or by remote access

Installation Drawing

- 1 - water supply
- 2 - active range
- 3 - spout
- 4 - chrome body
- 5 - thermostatic mixer



SLU 25Q

Technical Specification

SLU 25Q	water inlet spacing 150 mm
SLU 25KQ	water inlet spacing 100 mm
Operating voltage	24 V DC
Power input	3 W
Active range	
▪ standard	0,25 - 0,35 m
▪ START/STOP program	0,05 - 0,15 m
Recommended flow pressure	0,1 - 0,6 MPa
Rate of flow	6 l/min. (inf. data)
Water inlet	male thread G 1/2"

IQRF remote access

- complex and customized project solution
- remote access to individual products
- wireless network for communication with the application
- efficient monitoring of water (soap) consumption
- maximum savings in operating costs

Supply Specification

SLU 25Q	- Supply No. 03259	faucet with a spout, electronics IQRF, thermostat and electromagnetic valve,
SLU 25KQ	- Supply No. 13259	rossette (2 pcs.), chrome cover (2 pcs.), filter (2 pcs.), Allen key

Recommended Accessories

SLZ 01Y	- Supply No. 05012	power supply 24 V DC for operating of max. 10 pcs. of washbasin taps
SLZ 01Z	- Supply No. 05011	power supply 24 V DC for operating of max. 20 pcs. of washbasin taps
SLZ 04Y	- Supply No. 05042	power supply 24 V DC for DIN rail, for operating of max. 10 pcs. of washbasin taps
SLZ 04Z	- Supply No. 05041	power supply 24 V DC for DIN rail, for operating of max. 20 pcs. of washbasin taps
SLZ 04X	- Supply No. 10049	power supply 24 V DC for DIN rail, for operating of max. 33 pcs. of washbasin taps
SLD 03	- Supply No. 07030	remote control for an adjustment of parameters
SLA 55A	- Supply No. 06550	economical aerator 3,8 l/min
SLA 55B	- Supply No. 06551	economical aerator 1,9 l/min